

THE METHOD OF TRANSMISSION MATRIX FOR INVESTIGATING PLANAR MECHANISMS

DO SANH

Hanoi University of Technology

DO DANG KHOA

University of Texas at Austin, USA

Abstract. In this paper the method of transmission matrix is applied for investigating planar mechanisms [5–7]. As is known, in many engineering problems, for example, in the problem of synthesis and analysis of motion, the following problem is more and more interested. There is an object (a particle or body) connected with a frame of reference, which moves with respect to another frame. It is necessary to define the configuration (the position, velocity, acceleration) of the object under consideration in the latter frame. There are two types of the frame of reference. A frame that is fixed in time named inertia frame or global frame of reference and the frame attached to each body of the system- the body frame of reference. The problem is stated now as follows: Determine the configuration in global frame of a particle fixed in any body of the system.

In this paper a method is constructed for solving such a problem by means of transmission matrices.

The obtained results are illustrated by examples.

1. THE FORMULAS FOR DETERMINING THE CONFIGURATION OF THE OBJECT

Let us consider two bodies of a free loop, which are numbered as $(i-1)$ -body and i -body, joined together by the hinge A_i . Attach a frame of reference into each body (the body-frame). The $(i-1)$ body - frame has the origin at A_{i-1} and its axis $A_{i-1}x_{i-1}$ directing from A_{i-1} to A_i , where A_{i-1} is the hinge joining the $(i-1)$ body with the $(i-2)$ body.

The axis $A_{i-1}y_{i-1}$ is perpendicular to $A_{i-1}x_{i-1}$ in the direction of counter clockwise. The frame of reference glued to the i -body is formed in the similar way. The angle between A_{i-1} two frames of reference denoted by φ_i , is the M rotating angle of the axis $A_{i-1}x_{i-1}$ to $A_i x_i$ in direction of counter-clockwise (Fig. 1) [3, 7]. Let consider the point M fixed on the i -body. The coordinates of the point M in the i -body frame are denoted by the constants a and b and in the $(i-1)$ body frame – by ${}^{i-1}x_M$, ${}^{i-1}y_M$, which are variables of time. The notation located at high left corner is number of the body, on which the particle M on. Similarly, the coordinates of the point M in the inertia reference is denoted by 0x_M , 0y_M .

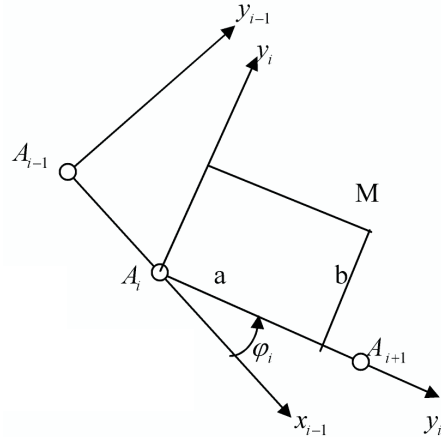


Fig. 1

The components of the coordinate of the point M in two frame in progressive order are related by the formula [4, 5, 7]

$$\begin{Bmatrix} {}^{i-1}x_M \\ {}^{i-1}y_M \\ 1 \end{Bmatrix} = \begin{Bmatrix} \cos \varphi_i & -\sin \varphi_i & L_{i-1} \\ \sin \varphi_i & \cos \varphi_i & 0 \\ 0 & 0 & 1 \end{Bmatrix} \begin{Bmatrix} a \\ b \\ 1 \end{Bmatrix}, \quad (1.1)$$

where: $L_{i-1} \equiv \overline{A_{i-1}A_i}$.

By introducing the symbols $\cos \varphi_i \equiv c_i$, $\sin \varphi_i \equiv s_i$ and the matrices

$$T_i \equiv \begin{Bmatrix} \cos \varphi_i & -\sin \varphi_i & L_{i-1} \\ \sin \varphi_i & \cos \varphi_i & 0 \\ 0 & 0 & 1 \end{Bmatrix} \equiv \begin{Bmatrix} c_i & -s_i & L_{i-1} \\ s_i & c_i & 0 \\ 0 & 0 & 1 \end{Bmatrix}. \quad (1.2)$$

$${}^{i-1}\mathbf{r}^T = \begin{Bmatrix} {}^{i-1}x_M & {}^{i-1}y_M & 1 \end{Bmatrix}, \quad {}^i\mathbf{r}^T = \begin{Bmatrix} a & b & 1 \end{Bmatrix} \quad (1.3)$$

the formula (1.1) is written in the form

$${}^{i-1}\mathbf{r} = \mathbf{T}_i^i \mathbf{r}. \quad (1.4)$$

Hereafter the matrix is noted by the bold letter and the vector is identify as $a(3 \times 1)$ matrix. Let us consider a system of k bodies in plane (where $k=3$), which are joined between each other by the hinges A_1, A_2, \dots, A_k respectively, where A_1 is fixed at time. Let put the inertia frame of reference at A_1 . For simplicity instead of the i -body frame let us put the vector \mathbf{x}_i with the origin at A_i and directing along the axis $A_i x_i$. The angle between two vectors \mathbf{x}_{i-1} and \mathbf{x}_i (Fig. 2). It is easy to derive the relationship between the coordinates of the point fixed to the k -body frame (with the coordinates a, b) and its coordinates in the global reference, that is

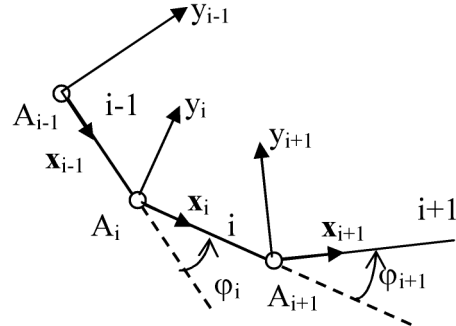


Fig. 2

$$\begin{Bmatrix} {}^0x \\ {}^0y \\ 1 \end{Bmatrix} = \mathbf{T}_1 \mathbf{T}_2 \dots \mathbf{T}_k \begin{Bmatrix} a \\ b \\ 1 \end{Bmatrix}, \quad (1.5)$$

or

$${}^0\mathbf{r}_M = \mathbf{T}_1 \mathbf{T}_2 \dots \mathbf{T}_k \mathbf{r}_M, \quad (1.6)$$

where the matrices $\mathbf{T}_i(1, k)$ take the same form as (1.2) in consideration of $L_0=0$.

By the formulas(1.5) and (1.6) we calculate the components of velocity of the point M in the global reference, that is

$$\mathbf{v} = \dot{\mathbf{r}} = \begin{Bmatrix} {}^0\dot{x}_M \\ {}^0\dot{y}_M \\ 0 \end{Bmatrix} = \sum_{i=1}^k \dot{\varphi}^{(*)} v_i, \quad (1.7)$$

where $\dot{\varphi}_i(*)$ is a (3×3) diagonal matrix of the form

$$\dot{\varphi}_i(*) = \left\| \begin{array}{ccc} \dot{\varphi}_i & 0 & 0 \\ 0 & \dot{\varphi}_i & 0 \\ 0 & 0 & \dot{\varphi}_i \end{array} \right\| \quad (1.8)$$

and the matrixes $\mathbf{v}_i (i = \overline{1, k})$ are calculated by following the formula

$$\mathbf{v}_i = \mathbf{T}_1 \mathbf{T}_2 \dots \mathbf{T}'_i \dots \mathbf{T}_k, \quad (1.9)$$

in which the matrices \mathbf{T}_i take the form (1.2), but the matrices \mathbf{T}'_i are drawn as follows

$$\|\mathbf{T}'_i\| = \left\| \begin{array}{ccc} -s_i & -c_i & 0 \\ c_i & -s_i & 0 \\ 0 & 0 & 0 \end{array} \right\|. \quad (1.10)$$

It is easy to show that the absolute angular velocity of the k^{th} link is calculated by the formula

$$\Omega_k = \sum_{i=1}^k \dot{\varphi}_i. \quad (1.11)$$

The components of acceleration of the point M in the global frame of reference are determined by following formula

$$\mathbf{a} = \left\| \begin{array}{c} {}^0\dot{x}_M \\ {}^0\dot{y}_M \\ 0 \end{array} \right\| = \sum_{i=1}^k \ddot{\varphi}_i(*) \mathbf{v}_i + \sum_{i=1}^k \dot{\varphi}_i(*) \mathbf{v}'_i + 2 \sum_{i=1}^{k-1} \sum_{j>i} \dot{\varphi}_i(*) \dot{\varphi}_j(*) \mathbf{v}_{i,j}, \quad (1.12)$$

where \mathbf{v}_i is calculated by (1.9), $\ddot{\varphi}_i(*)$ is a (3×3) diagonal matrix of the form

$$\ddot{\varphi}_i(*) = \left\| \begin{array}{ccc} \ddot{\varphi}_i & 0 & 0 \\ 0 & \ddot{\varphi}_i & 0 \\ 0 & 0 & \ddot{\varphi}_i \end{array} \right\| \quad (1.13)$$

but $\mathbf{v}'_i, \mathbf{v}_{i,j}$ are determined by following formulas

$$\mathbf{v}'_i = \mathbf{T}_1 \mathbf{T}_2 \dots \mathbf{T}''_i \dots \mathbf{T}_k, \quad (1.14)$$

$$\mathbf{v}_{i,j} = \mathbf{T}_1 \mathbf{T}_2 \dots \mathbf{T}'_i \dots \mathbf{T}'_j \dots \mathbf{T}_k, \quad (1.15)$$

where

$$\mathbf{T}''_i = \left\| \begin{array}{ccc} -c_i & s_i & 0 \\ -s_i & -c_i & 0 \\ 0 & 0 & 0 \end{array} \right\|. \quad (1.16)$$

The absolute angular acceleration of the k^{th} link is of the form

$$\overline{\varepsilon}_k = \sum_{i=1}^k \ddot{\varphi}_i. \quad (1.17)$$

In order to use the above obtained formulas it is necessary to bring to the following notices

- a) In the case of an open loop, i.e. when the last link of the loop under consideration is one end free, it is possible to apply directly these formulas

- b) In the case of closed loop, i.e. there is a point of the last link fixed at time with respect to the global frame of reference, first it is necessary to find the configuration of this point.

By such a way we get two equations for each kind of the configuration (the position, velocity, acceleration). Solving the obtained equations we determine the configuration of the system under consideration.

- c) When the system is a semi-closed loop, i.e. when a point of the last link moves along any curve fixed in the global frame of reference, it is necessary to write the configuration equations for this point, by which we will find the configuration of the system.

2. APPLICATION

Example 1. Let us consider a free loop of three links (Fig. 3). We put three body frames of reference as in the Fig. 3 [5, 6], which are expressed by three vectors $\mathbf{x}_1, \mathbf{x}_2, \mathbf{x}_3$. The global frame of reference is noted by the vector \mathbf{x}_0 . By such a way there are three transmission matrices, that are

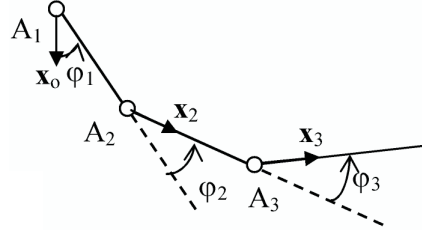


Fig. 3

$$\mathbf{T}_1 = \begin{Bmatrix} c_1 & -s_1 & 0 \\ s_1 & c_1 & 0 \\ 0 & 0 & 1 \end{Bmatrix}; \quad \mathbf{T}_2 = \begin{Bmatrix} c_2 & -s_2 & L_1 \\ s_2 & c_2 & 0 \\ 0 & 0 & 1 \end{Bmatrix}; \quad \mathbf{T}_3 = \begin{Bmatrix} c_3 & -s_3 & L_2 \\ s_3 & c_3 & 0 \\ 0 & 0 & 1 \end{Bmatrix}. \quad (2.1)$$

In accordance with the rules (1.10), (1.16) we have

$$\mathbf{T}'_1 = \begin{Bmatrix} -s_1 & -c_1 & 0 \\ c_1 & -s_1 & 0 \\ 0 & 0 & 0 \end{Bmatrix}; \quad \mathbf{T}'_2 = \begin{Bmatrix} -s_2 & -c_2 & 0 \\ c_2 & -s_2 & 0 \\ 0 & 0 & 0 \end{Bmatrix}; \quad \mathbf{T}'_3 = \begin{Bmatrix} -s_3 & -c_3 & 0 \\ c_3 & -s_3 & 0 \\ 0 & 0 & 0 \end{Bmatrix}. \quad (2.2)$$

$$\mathbf{T}''_1 = \begin{Bmatrix} -c_1 & s_1 & 0 \\ -s_1 & -c_1 & 0 \\ 0 & 0 & 0 \end{Bmatrix}; \quad \mathbf{T}''_2 = \begin{Bmatrix} -c_2 & s_2 & 0 \\ -s_2 & -c_2 & 0 \\ 0 & 0 & 0 \end{Bmatrix}; \quad \mathbf{T}''_3 = \begin{Bmatrix} -c_3 & s_3 & 0 \\ -s_3 & -c_3 & 0 \\ 0 & 0 & 0 \end{Bmatrix}. \quad (2.3)$$

Let us consider the point M fixed in the 3th - link and having the body-coordinates to be a and b . The components of coordinate of the point M in the global reference are computed by following the formula (1.5), that are

$$\begin{Bmatrix} {}^0x_M \\ {}^0y_M \\ 1 \end{Bmatrix} = \mathbf{T}_1 \mathbf{T}_2 \mathbf{T}_3 \begin{Bmatrix} a \\ b \\ 1 \end{Bmatrix} = \begin{Bmatrix} ac_{123} - bs_{123} + L_2c_{12} + L_1c_1 \\ as_{123} + bc_{123} + L_2s_{12} + L_1s_1 \\ 1 \end{Bmatrix}.$$

The coordinates of the point M in the global reference are of the form

$${}^0x_M = ac_{123} - bs_{123} + L_2c_{12} + L_1c_1; \quad {}^0y_M = as_{123} + bc_{123} + L_2s_{12} + L_1s_1,$$

where the following symbols are used

$$c_{123} \equiv \cos(\varphi_1 + \varphi_2 + \varphi_3); \quad s_{123} \equiv \sin(\varphi_1 + \varphi_2 + \varphi_3); \quad c_{12} \equiv \cos(\varphi_1 + \varphi_2); \quad s_{12} \equiv \sin(\varphi_1 + \varphi_2).$$

In order to calculate the components of the velocity of the point M in the global reference, let us write the formula (1.7). For this purpose we calculate the matrices $\mathbf{v}_1, \mathbf{v}_2, \mathbf{v}_3$ by means of formula (1.9), that are

$$\begin{aligned}\mathbf{v}_1 &= \mathbf{T}'_1 \mathbf{T}_2 \mathbf{T}_3 \mathbf{r} = \begin{vmatrix} -as_{123} - bc_{123} - (L_2 s_{12} + L_1 s_1) \\ ac_{123} - bs_{123} + L_2 c_{12} + L_1 c_1 \\ 0 \end{vmatrix}; \\ \mathbf{v}_2 &= \mathbf{T}_1 \mathbf{T}'_2 \mathbf{T}_3 \mathbf{r} = \begin{vmatrix} -(as_{123} + bc_{123} + L_2 s_{12}) \\ ac_{123} - bs_{123} + L_2 c_{12} \\ 0 \end{vmatrix}; \\ \mathbf{v}_3 &= \mathbf{T}_1 \mathbf{T}_2 \mathbf{T}'_3 \mathbf{r} = \begin{vmatrix} -(as_{123} + bc_{123}) \\ ac_{123} - bs_{123} \end{vmatrix}.\end{aligned}$$

The formula (1.7) takes the form now

$$\mathbf{v} = \begin{vmatrix} {}^0\dot{x}_M \\ {}^0\dot{y}_M \\ 1 \end{vmatrix} = \begin{vmatrix} -(as_{123} + bc_{123} + L_2 s_{12} + L_1 s_1)\dot{\varphi}_1 - (as_{123} + bc_{123} + L_2 s_{12})\dot{\varphi}_2 - (as_{123} + bc_{123})\dot{\varphi}_3 \\ (ac_{123} - bs_{123} + L_2 c_{12} + L_1 c_1)\dot{\varphi}_1 + (ac_{123} - bs_{123} + L_2 c_{12})\dot{\varphi}_2 + (ac_{123} - bs_{123})\dot{\varphi}_3 \\ 0 \end{vmatrix}.$$

The components of acceleration of the point M in the global reference are computed by the formula (1.12), where the matrices $\mathbf{v}_1, \mathbf{v}_2, \mathbf{v}_3$ are determined as above, but the matrices $\mathbf{v}'_i (i = 1, 2, 3)$, $\mathbf{v}_{i,j} (i, j = 1, 2, 3)$ by means (1.14), (1.15) will be

$$\begin{aligned}\mathbf{v}'_1 &= \mathbf{T}''_1 \mathbf{T}_2 \mathbf{T}_3 \mathbf{r} = \begin{vmatrix} -(ac_{123} - bs_{123} + L_2 c_{12} + L_1 c_1) \\ -(as_{123} + bc_{123} + L_2 s_{12} + L_1 s_1) \\ 0 \end{vmatrix}; \\ \mathbf{v}'_2 &= \mathbf{T}_1 \mathbf{T}'_2 \mathbf{T}_3 \mathbf{r} = \begin{vmatrix} -(ac_{123} - bs_{123} + L_2 c_{12}) \\ -(as_{123} + bc_{123} + L_2 s_{12}) \\ 0 \end{vmatrix}; \\ \mathbf{v}'_3 &= \mathbf{T}_1 \mathbf{T}_2 \mathbf{T}''_3 \mathbf{r} = \begin{vmatrix} -ac_{123} + bs_{123} \\ -(as_{123} + bc_{123}) \\ 0 \end{vmatrix}; \\ \mathbf{v}_{1,2} &= \mathbf{T}'_1 \mathbf{T}'_2 \mathbf{T}_3 \mathbf{r} = \begin{vmatrix} -(ac_{123} + bs_{123} + L_2 c_{12}) \\ -(as_{123} + bc_{123} + L_2 s_{12}) \\ 0 \end{vmatrix}; \\ \mathbf{v}_{1,3} &= \mathbf{T}'_1 \mathbf{T}_2 \mathbf{T}'_3 \mathbf{r} = \begin{vmatrix} -(ac_{123} + bs_{123}) \\ -as_{123} - bc_{123} \\ 0 \end{vmatrix}; \\ \mathbf{v}_{2,3} &= \mathbf{T}_1 \mathbf{T}'_2 \mathbf{T}'_3 \mathbf{r} = \begin{vmatrix} -(ac_{123} + bs_{123}) \\ -(as_{123} + bc_{123}) \\ 0 \end{vmatrix}.\end{aligned}$$

By applying the (1.12) it is easy to find the components of acceleration of the point M in the global reference, that are

$$\begin{aligned}
{}^0\ddot{x}_M &= -(as_{123} + bc_{123} + L_2s_{12} + L_1s_1)\ddot{\varphi}_1 + (as_{123} + bc_{123} + L_2s_{12})\ddot{\varphi}_2 \\
&\quad + (as_{123} + bc_{123} + L_2s_{12})\ddot{\varphi}_3 - 2(ac_{123} - bs_{123} + L_2c_{12} + L_1c_1)\dot{\varphi}_1^2 \\
&\quad - (ac_{123} - bs_{123} + L_2c_{12})\dot{\varphi}_2^2 - (ac_{123} + bs_{123})\dot{\varphi}_3^2 - 2(ac_{123} + bs_{123} - L_2c_{12})\dot{\varphi}_1\dot{\varphi}_2 \\
&\quad - 2(ac_{123} - bs_{123})\dot{\varphi}_1\dot{\varphi}_3 - 2(ac_{123} + bs_{123})\dot{\varphi}_2\dot{\varphi}_3. \\
{}^0\ddot{y}_M &= (ac_{123} - bs_{123} + L_2c_{12} + L_1c_1)\ddot{\varphi}_1 + (ac_{123} - bs_{123} + L_2c_{12})\ddot{\varphi}_2 + (as_{123} + bc_{123})\ddot{\varphi}_3 \\
&\quad - (as_{123} + bc_{123} + L_2s_{12} + L_1s_1)\dot{\varphi}_1^2 - (as_{123} + bc_{123})\dot{\varphi}_2^2 - (as_{123} + bc_{123})\dot{\varphi}_3^2 \\
&\quad - 2(as_{123} + bc_{123} + L_2s_{12})\dot{\varphi}_1\dot{\varphi}_2 - 2(as_{123} + bc_{123})\dot{\varphi}_1\dot{\varphi}_3 - 2(as_{123} + bc_{123})\dot{\varphi}_2\dot{\varphi}_3.
\end{aligned}$$

Of course, in the case of using numerical methods, it is unnecessary to write the expressions in an universal form, for example, in the case of a loop of many links.

Example 2. Let us consider a slider-crank mechanism. The crank OA rotates about O with angular velocity and acceleration ω_1 and ε_1 , respectively. The length of the crank OA is $r=0.4$ m, but the one of the connecting rod AB is $L=2$ m. Determine the angular velocity and acceleration of the connecting rod at $\varphi = \frac{\pi}{2}$ (Fig. 4).

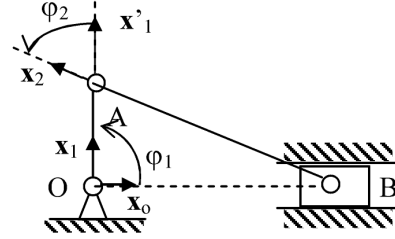


Fig. 4

The mechanism under consideration is a semi-closed loop, because the point of the link AB (last link) moves along the horizontal line, fixed in the inertia frame of reference. The system consists of

two links joined each other by the hinge A . The global reference is represented by vector \mathbf{x}_0 in horizontal direction to right side. The body-frames are represented by the vectors $\mathbf{x}_1, \mathbf{x}_2, \mathbf{x}_3$ as shown in Fig. 4. The point B located at the second link. Its body-coordinates are $(-2, 0)$, but the global coordinates are $(x_B, 0)$. In order to write the configuration equations for the considered system it is necessary to determine the transmission matrices $\mathbf{T}_1, \mathbf{T}_2, \mathbf{T}'_1, \mathbf{T}'_2, \mathbf{T}''_1, \mathbf{T}''_2$, which are of the form

$$\begin{aligned}
\mathbf{T}_1 &= \begin{vmatrix} c_1 & -s_1 & 0 \\ s_1 & c_1 & 0 \\ 0 & 0 & 1 \end{vmatrix}; & \mathbf{T}_2 &= \begin{vmatrix} c_2 & -s_2 & 0.4 \\ s_2 & c_2 & 0 \\ 0 & 0 & 1 \end{vmatrix}; & \mathbf{T}'_1 &= \begin{vmatrix} -s_1 & -c_1 & 0 \\ c_1 & -s_1 & 0 \\ 0 & 0 & 0 \end{vmatrix}; \\
\mathbf{T}'_2 &= \begin{vmatrix} -s_2 & -c_2 & 0 \\ c_2 - s_2 & 0 & 0 \\ 0 & 0 & 0 \end{vmatrix}; & \mathbf{T}''_1 &= \begin{vmatrix} -c_1 & s_1 & 0 \\ -s_1 & -c_1 & 0 \\ 0 & 0 & 0 \end{vmatrix}; & \mathbf{T}''_2 &= \begin{vmatrix} -c_2 & s_2 & 0 \\ -s_2 & -c_2 & 0 \\ 0 & 0 & 0 \end{vmatrix}.
\end{aligned}$$

At the given position of the mechanism we have: $\varphi_1 = \frac{\pi}{2}$. Therefore: $c_1 = 0$; $s_1 = 1$.

In order to determine the position of the system at given time, i.e. the value of the angle φ_2^* , let us write the equation (1.5) for the point B in consideration of the above

calculated values, that are:

$$\begin{Bmatrix} {}^0x_B^* \\ 0 \\ 1 \end{Bmatrix} = \mathbf{T}_1^* \mathbf{T}_2^* \mathbf{r} = \begin{Bmatrix} 2s_2^* \\ -2c_2^* + 0.4 \\ 1 \end{Bmatrix}.$$

Hereafter the symbol “*” located on high right corner of the letter denotes the value of the quantity at the given instant of time.

The obtained matrix equation is equivalent to following two equations:

$${}^0x_B^* = -2s_2^*; \quad -2c_2^* + 0.4 = 0.$$

The angle φ_2^* is defined by $c_2^* = 0.2$; $s_2^* = \sqrt{0.96}$, but the coordinates of the point B at the given instant of time is equal to $(2\sqrt{0.96}; 0)$.

For solving the problem of velocity, we apply the formula (1.7). First let us to calculate the matrices $\mathbf{v}_1, \mathbf{v}_2$ at the given time, that are

$$\mathbf{v}_1^* = \mathbf{T}_1'^* \mathbf{T}_2^* \mathbf{r} = \begin{Bmatrix} 0 \\ 2\sqrt{0.96} \\ 0 \end{Bmatrix}; \quad \mathbf{v}_2^* = \mathbf{T}_1^* \mathbf{T}_2'^* \mathbf{r} = \begin{Bmatrix} 0.4 \\ 2\sqrt{0.96} \\ 0 \end{Bmatrix}.$$

By means of (1.7) we calculate

$${}^0\dot{x}_B^* = 0.4\dot{\varphi}_1^* = 0.4\omega_1; \quad {}^0\dot{y}_B^* = 2\sqrt{0.96}\dot{\varphi}_1^* + 2\sqrt{0.96}\dot{\varphi}_2^*.$$

Because the velocity of the point B is in horizontal direction, i.e. ${}^0\dot{y}_B^* = 0$, we have then

$$0 = \dot{\varphi}_1^* + \dot{\varphi}_2^* \rightarrow \dot{\varphi}_2^* = -\dot{\varphi}_1^*.$$

Absolute angular velocity Ω_2 of the connecting rod AB is determined by means of (1.11):

$$\Omega_2^* = \dot{\varphi}_1^* + \dot{\varphi}_2^* = 0.$$

This means that at the given instant of time the rod AB is in instantaneous translation.

The velocity of the point B is equal to

$$v_B^* \equiv {}^0\dot{x}_B^* = 0.4\dot{\varphi}_1^* = r\omega_1 = v_A^*.$$

It is clear, because the rod AB is in instantaneous translation.

In order to determine acceleration it is necessary to write the equation (1.12). For this aim, let us calculate the matrices $\mathbf{v}'_1, \mathbf{v}'_2, \mathbf{v}_{1,2}$ corresponding to the given of time. That are

$$\mathbf{v}'_1^* = \mathbf{T}''_1^* \mathbf{T}_2^* \mathbf{r} = \begin{Bmatrix} -2\sqrt{0.96} \\ 0 \\ 0 \end{Bmatrix}; \quad \mathbf{v}'_2^* = \mathbf{T}_1^* \mathbf{T}''_2^* \mathbf{r} = \begin{bmatrix} -2\sqrt{0.96} \\ 0.4 \\ 0 \end{bmatrix}; \quad \mathbf{v}_{1,2}^* = \mathbf{T}_1^* \mathbf{T}''_2^* \mathbf{r} = \begin{Bmatrix} -2\sqrt{0.96} \\ 0.4 \\ 0 \end{Bmatrix}.$$

By writting and developping the equation (1.12) the components of acceleration of the point B in the global reference will be

$$\begin{aligned} {}^0\ddot{x}_B^* &= 0.4\ddot{\varphi}_2^* - 2\sqrt{0.96}\dot{\varphi}_1^{2*} - 2\sqrt{0.96}\dot{\varphi}_2^{2*} - 4\sqrt{0.96}\dot{\varphi}_1^*\dot{\varphi}_2^*; \\ {}^0\ddot{y}_B^* &= 2\sqrt{0.96}\ddot{\varphi}_1^* + 2\sqrt{0.96}\ddot{\varphi}_2^* + 0.4\dot{\varphi}_2^{2*} + 0.8\dot{\varphi}_1^*\dot{\varphi}_2^* = 0 \end{aligned}$$

Solving the last equation in consideration of $\dot{\varphi}_2^* = -\dot{\varphi}_1^*$, we obtain

$$\ddot{\varphi}_2^* = -\ddot{\varphi}_1^* + \frac{0.2}{\sqrt{0.96}}\dot{\varphi}_1^{2*}.$$

The absolute angular acceleration of the rod AB are of the form

$$\varepsilon_2^* = \ddot{\varphi}_1^* + \ddot{\varphi}_2^* = \frac{0.2}{\sqrt{0.96}} \dot{\varphi}_1^{2*} = \frac{0.2}{\sqrt{0.96}} \omega_1^2.$$

It is easy to find the acceleration of the point B at the given instant of time in the global reference

$$a_B^* = {}^0\ddot{x}_B^* = -0.4\ddot{\varphi}_1^* + \frac{0.08}{\sqrt{0.96}} \dot{\varphi}_1^{2*} = -0.4\varepsilon_1 + \frac{0.08}{\sqrt{0.96}} \omega_1^2.$$

Example 3. Let consider a four bar mechanism. The rod AB and DC are same length $R=0.4$ m. The length of the connecting rod BC is $L=0.2$ m. Determinee angular velocity and acceleration of the connecting rod BC when the mechanism takes the position shown in the Fig. 5. At the given instant of time the crank AB rotates about A with the angular velocity and acceleration ω_1, ε_1 , respectively. The system under consideration consists of three moving bars. This is a closed loop because the point D of the last link is fixed in the inertia reference. Let us choose the global reference represented by the

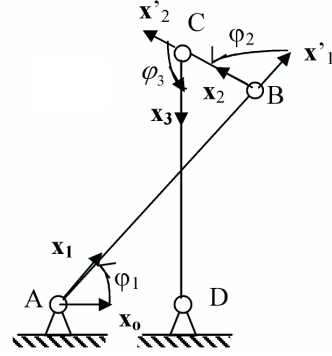


Fig. 5

vector \mathbf{x}_0 , having the origin at A and directing to the right side. The body frames of reference are chosen as in Fig. 5. At the interest position of mechanism we have

$$\varphi_2 = \frac{\pi}{2}, \quad \varphi_1 + \varphi_3 = \pi \rightarrow c_2 = 0, \quad s_2 = 1, \quad c_3 = -c_1, \quad s_3 = s_1.$$

Let us write the configuration equation for the point D , which has the global and body coordinates are $(0.2, 0)$ and $(0.4, 0)$ respectively. For this aim let us calculate the following matrices

$$\mathbf{T}_1^* = \begin{Bmatrix} c_1^* & -s_1^* & 0 \\ s_1^* & c_1^* & 0 \\ 0 & 0 & 1 \end{Bmatrix}; \quad \mathbf{T}_2^* = \begin{Bmatrix} 0 & -1 & 0.4 \\ 1 & 0 & 0 \\ 0 & 0 & 1 \end{Bmatrix}; \quad \mathbf{T}_3^* = \begin{Bmatrix} -c_1^* & -s_1^* & 0.2 \\ s_1^* & -c_1^* & 0 \\ 0 & 0 & 1 \end{Bmatrix};$$

$${}^0\mathbf{r}_D = \begin{Bmatrix} 0.2 \\ 0 \\ 1 \end{Bmatrix}; \quad {}^3\mathbf{r}_D = \begin{Bmatrix} 0.4 \\ 0 \\ 1 \end{Bmatrix}.$$

By writting the equation (1.5) for the point D , we get

$$\begin{Bmatrix} 0.2 \\ 0 \\ 1 \end{Bmatrix} = \mathbf{T}_1^* \mathbf{T}_2^* \mathbf{T}_3^* \begin{Bmatrix} 0.4 \\ 0 \\ 1 \end{Bmatrix} = \begin{Bmatrix} -0.2s_1^* + 0.4c_1^* \\ 0.4s_1^* + 0.2c_1^* - 0.4 \\ 1 \end{Bmatrix}.$$

Since we obtain two equations, that are

$$-0.2s_1^* + 0.4c_1^* = 0.2; \quad 0.4s_1^* + 0.2c_1^* = 0.4.$$

By solving these equations, we get

$$c_1^* = 0.8; \quad s_1^* = 0.6.$$

In order define the velocity and acceleration, let us to determine the following matrices.

$$\mathbf{T}'_1 = \begin{vmatrix} -0.6 & -0.8 & 0 \\ 0.8 & -0.6 & 0 \\ 0 & 0 & 0 \end{vmatrix}; \quad \mathbf{T}''_2 = \begin{vmatrix} -1 & 0 & 0 \\ 0 & -1 & 0 \\ 0 & 0 & 0 \end{vmatrix}; \quad \mathbf{T}'_3 = \begin{vmatrix} -0.6 & 0.8 & 0 \\ -0.8 & -0.6 & 0 \\ 0 & 0 & 0 \end{vmatrix};$$

$$\mathbf{T}''_1 = \begin{vmatrix} -0.8 & 0.6 & 0 \\ -0.6 & -0.8 & 0 \\ 0 & 0 & 0 \end{vmatrix}; \quad \mathbf{T}''_2 = \begin{vmatrix} 0 & 1 & 0 \\ -1 & 0 & 0 \\ 0 & 0 & 0 \end{vmatrix}; \quad \mathbf{T}''_3 = \begin{vmatrix} 0.8 & 0.6 & 0 \\ -0.6 & 0.8 & 0 \\ 0 & 0 & 0 \end{vmatrix};$$

$$\mathbf{v}_1^* = \mathbf{T}'_1 \mathbf{T}_2^* \mathbf{T}_3^* \mathbf{r}_D = \begin{vmatrix} 0 \\ 0.2 \\ 0 \end{vmatrix}; \quad \mathbf{v}_2^* = \mathbf{T}_1^* \mathbf{T}'_2 \mathbf{T}_3^* \mathbf{r}_D = \begin{vmatrix} 0.24 \\ -0.12 \\ 0 \end{vmatrix};$$

$$\mathbf{v}_3^* = \mathbf{T}_1^* \mathbf{T}_2^* \mathbf{T}'_3 \mathbf{r}_D = \begin{vmatrix} 0.4 \\ 0 \\ 0 \end{vmatrix}.$$

The point D is fixed with respect to the global reference. Therefore their components of velocity and acceleration in the global reference are equal to zero. By writting the velocity's equation (the equation (1.7)) for the point D at the given instant of time and developing it we obtain

$$0 = 0.24\dot{\varphi}_2^* + 0.4\dot{\varphi}_3^*; \quad 0 = 0.2\dot{\varphi}_1^* - 0.12\dot{\varphi}_2^*.$$

Solving these equations we get

$$\dot{\varphi}_2^* = \frac{5}{3}\dot{\varphi}_1^* = \frac{5}{3}\omega_1; \quad \dot{\varphi}_3^* = -\frac{3}{5}\dot{\varphi}_2^* = -\dot{\varphi}_1^*.$$

The absolute angular velocities of the links BC and CD will be

$$\Omega_2^* = \dot{\varphi}_1^* + \dot{\varphi}_2^* = \frac{8}{3}\dot{\varphi}_1^* = \frac{8}{3}\omega_1; \quad \Omega_3^* = \dot{\varphi}_1^* + \dot{\varphi}_2^* + \dot{\varphi}_3^* = \frac{5}{3}\omega_1.$$

In order to determine the acceleration let us write the matrix equation (1.12). For this aim, it is necessary to define the matrices $\mathbf{v}'_1, \mathbf{v}'_2, \mathbf{v}'_3, \mathbf{v}_{1,2}, \mathbf{v}_{1,3}, \mathbf{v}_{2,3}$ at the given instant of time.

It is easy to obtain

$$\mathbf{v}'_1 = \mathbf{T}''_1 \mathbf{T}_2^* \mathbf{T}_3^* \mathbf{r}_D = \begin{vmatrix} -0.2 \\ 0 \\ 0 \\ 0 \end{vmatrix}; \quad \mathbf{v}'_2 = \mathbf{T}_1^* \mathbf{T}''_2 \mathbf{T}_3^* \mathbf{r}_D = \begin{vmatrix} 0.12 \\ 0.24 \\ 0 \end{vmatrix};$$

$$\mathbf{v}'_3 = \mathbf{T}_1^* \mathbf{T}_2^* \mathbf{T}''_3 \mathbf{r}_D = \begin{vmatrix} 0.4 \\ 0.4 \\ 0 \end{vmatrix}; \quad \mathbf{v}_{1,2} = \mathbf{T}'_1 \mathbf{T}'_2 \mathbf{T}_3^* \mathbf{r}_D = \begin{vmatrix} 0.12 \\ 0.24 \\ 0 \end{vmatrix};$$

$$\mathbf{v}_{1,3} = \mathbf{T}'_1 \mathbf{T}'_2 \mathbf{T}'_3 \mathbf{r}_D = \begin{Bmatrix} 0 \\ 0.4 \\ 0 \end{Bmatrix}; \mathbf{v}_{2,3} = \mathbf{T}^*_1 \mathbf{T}'_2 \mathbf{T}'_3 \mathbf{r}_D = \begin{Bmatrix} 0 \\ 0.4 \\ 0 \end{Bmatrix}.$$

Writing the equation (1.12) and developping it we get

$$\begin{aligned} {}^0\ddot{x}_D &= 0 \rightarrow 0.24\ddot{\varphi}_2^* + 0.40\ddot{\varphi}_3^* - 0.20\dot{\varphi}_1^{2*} + 0.12\dot{\varphi}_2^{2*} + 0.24\dot{\varphi}_1^*\dot{\varphi}_2^*, \\ {}^0\ddot{y}_D &= 0 \rightarrow 0.20\ddot{\varphi}_1^* - 0.12\ddot{\varphi}_2^* + 0.24\dot{\varphi}_2^{2*} + 0.40\dot{\varphi}_3^{2*} + 0.48\dot{\varphi}_1^*\dot{\varphi}_2^*. \end{aligned}$$

By substituting

$$\dot{\varphi}_1^* = \omega_1, \ddot{\varphi}_1^* = \varepsilon_1; \dot{\varphi}_2^* = \omega_2 = \frac{5}{3}\omega_1; \dot{\varphi}_3^* = -\omega_1, \varepsilon_2 = \dot{\varphi}_1^* + \dot{\varphi}_2^*; \varepsilon_3 = \ddot{\varphi}_1^* + \ddot{\varphi}_2^* + \ddot{\varphi}_3^*,$$

into the above equations and solving them we will determine the angular accelerations of the connecting rod BC and the bar DC , that are

$$\varepsilon_2 = \frac{8}{3}\varepsilon_1 - \frac{20}{9}\omega_1^2; \varepsilon_3 = \frac{5}{3}\varepsilon_1 - \frac{20}{9}\omega_1^2.$$

3. CONCLUSION

The proposed method allows to define the configuration of mechanisms by means of the point of general view. It is important that by such a way it is possible to apply directly and usefully the softwere as MATLAB, MAPLE, MATCAD,... for solving complecated systems.

This work is completed by financial support of the Basic Program in Natural Science

REFERENCES

1. H. Abdellatif, M. Grotjahn, and B. Heimann, High Efficient Dynamics Calculation Aproach for Computed-Force Control of Robots with Parallel Structures, *Proc. of the 44th IEEE Conference on Decision and Control and the 2005 European Control Conference*, CDC-ECC05, Sevilla, Spain, 2005, pp.2024-2029.
2. H. Cheng, Y. Kuen, and Z. Li, Dynamimics and Control of Redundantly Actuated Parallel Manipulators, *IEEE/ASME Transactions on Mechatronics* **8** (4) (2003) 483-491.
3. Do Dang Khoa, Tran Duc, Dinh Van Phong, Do Sanh, The Optimal Control for the System of Program Motion, *The 3rd Vietnam Conference on Mechatronics*, VMC 2006, Hanoi, Vietnam, Publ. Hanoi National University, pp. 87-95.
4. E. J. Haug, *Computer Aided Kinematics and Dynamics of Mechanical Systems*, Volume I, Basic Method, Alyn& Bacon, NewYork, 1989.
5. E. NikravesP, *Computer Aided Analysics of Mechanical System*, Printice Hall, NewYork, 1989.
6. B. Paul, *Kinematics and Dynamics of Planar Machinery*, Printice Hall, NewYork, 1989.
7. A. Shabana, *Dynamics of Multibody Systems*, John Willey&Sonc, NewYork /Chichester/Brisbane, 1989.

Received October 4, 2006

PHƯƠNG PHÁP MA TRẬN TRUYỀN KHẢO SÁT CÁC CƠ CẤU PHẪNG

Trong bài báo đề xuất một phương pháp khảo sát động học các cơ cấu phẳng, bài toán đang được quan tâm do đòi hỏi của phát triển kỹ thuật, đặc biệt trong các bài toán tổng hợp và điều khiển chuyển động. Trong phương pháp đề xuất đã xây dựng một lộ trình đơn giản để xác định các yếu tố hình - động học của cơ cấu (vị trí, vận tốc, gia tốc). Đặc biệt theo lộ trình được nêu cho phép sử dụng tiện lợi các phần mềm chuyên dụng như MATCAD, MAPLE, để giải quyết các bài toán động học các cơ cấu phẳng.